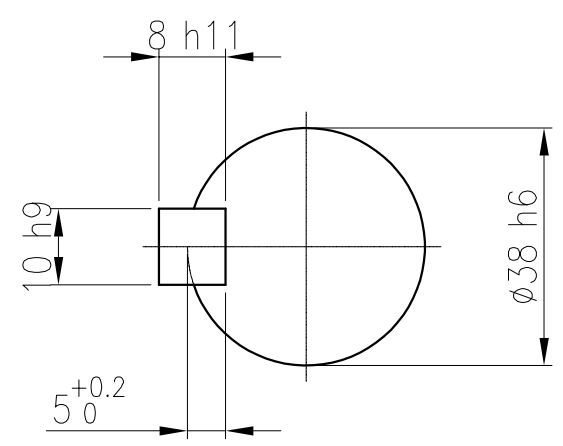
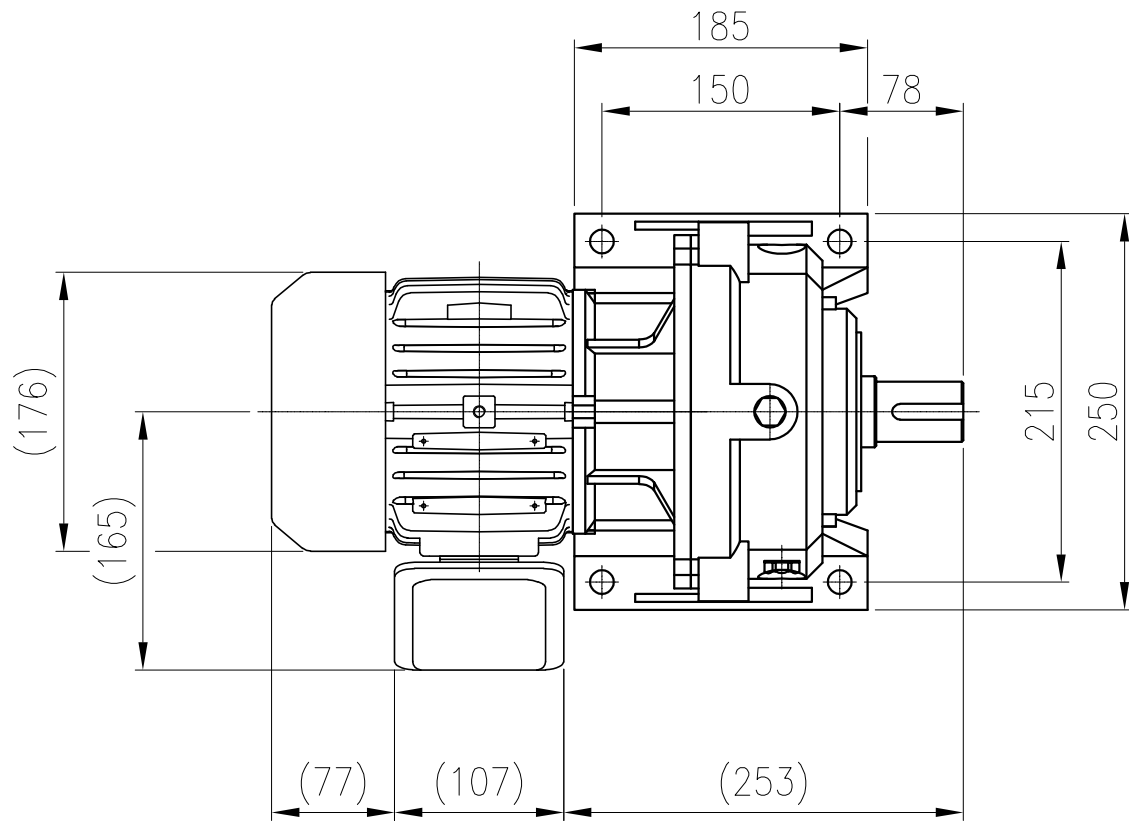
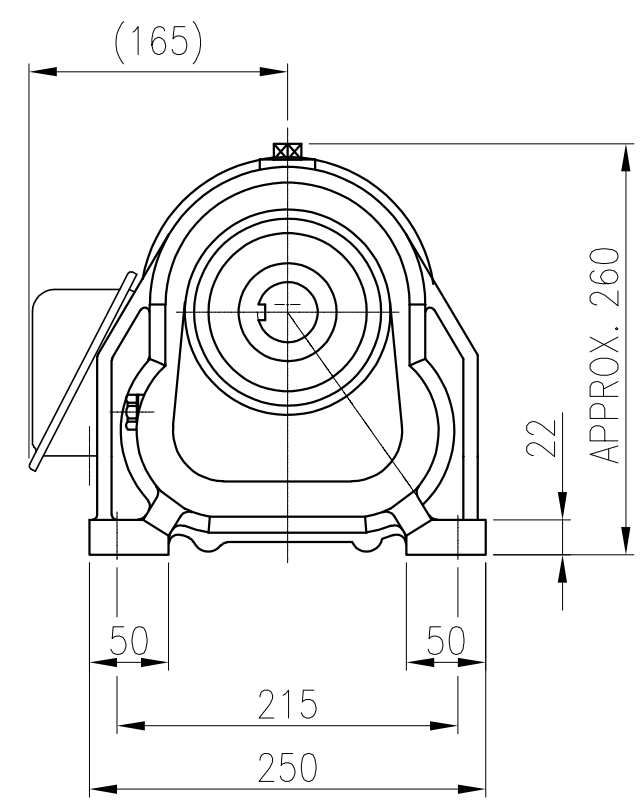
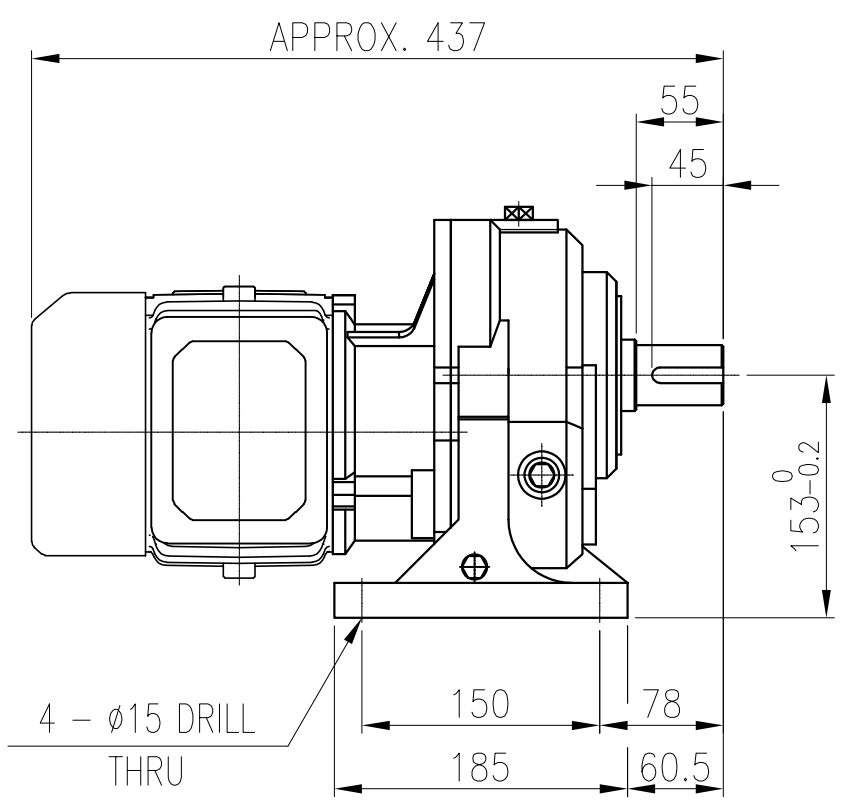


1	2	3	4	5
No.	NAME	MATERIAL	DWG/MATL No.	CODE
				Q'TY
				0
				SIZE
				WEIGHT
				REMARK



OUTPUT SHAFT
KEY 10 x 8 x 40



OIL SEAL		BEARING		GREASE : NLGI(EP)00	
MOTOR SHAFT	D(M) 20 x 32 x 8	2ND PINION	6203ZZ 6202ZZ	ABOUT	0.50 kg
OUTPUT SHAFT	D(M) 45 x 62 x 12	3RD PINION	6204ZZ 6304ZZ	WEIGHT	51.54 Kg
		OUTPUT SHAFT	PM3030 6309ZZ		

DWG NAME						외형도 OUTKUNE DIMENSION			
DWG No. EK2D007664H001				UNIT	mm				
				SCALE	1:1				
No.	DATE	DESCRIPTION of REVISION		DESIGNED	CHECKED	REVIEWED	APPROVED	DATE	2019-01-21
A4(210X297mm)	FORM CE-14-0100-4A4 2013.11.20	HYOSUNG HEAVY INDUSTRIES		2019.01.21	2019.01.21	2019.01.21	2019.01.21	REVISION No.	00
TYPE		15Fr(0.75kW)_40~120:1_프리미엄		하슬기	문병선	박희성	홍원철	THIRD ANGLE PROJECTION	
REF. No.				-				A	

이 도면상에 표시된 정보는 호성중공업(주)의 소유이며 당사의 사전 서면동의 없이 무단사용을 금합니다.